

Section I - Nassau County State Highway Projects (FDOT)

BAY ROAD (CR 115)

4282032



Work Summary:

WIDEN/RESURFACE
EXIST LANES

From: CONNER NELSON ROAD

To: CR 108

Project Length: 3.210 mi

Phase	Fund Source	2011/12	2012/13	2013/14	2014/15	2015/16	Total
CST	GRSC	0	963,000	0	0	0	963,000
Total		0	963,000	0	0	0	963,000

Project Description:

BAY ROAD (CR 115)

4282031



Work Summary: WIDEN/RESURFACE
EXIST LANES

From: CR 121

To: CONNER NELSON ROAD

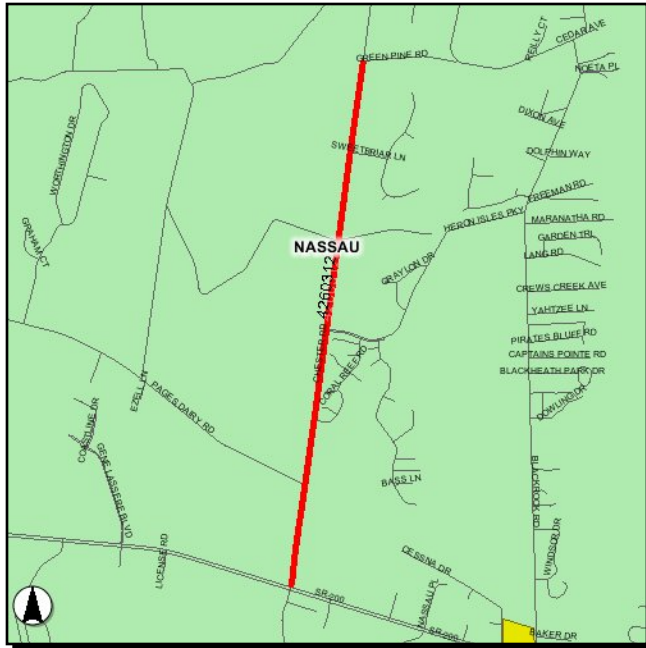
Project Length: 2.770 mi

Phase	Fund Source	2011/12	2012/13	2013/14	2014/15	2015/16	Total
CST	GRSC	936,656	0	0	0	0	936,656
Total		936,656	0	0	0	0	936,656

Project Description:

CHESTER ROAD

4260312



Work Summary: ADD LANES & RECONSTRUCT

From: SR A1A

To: GREEN PINE ROAD

Project Length: 2.343 mi

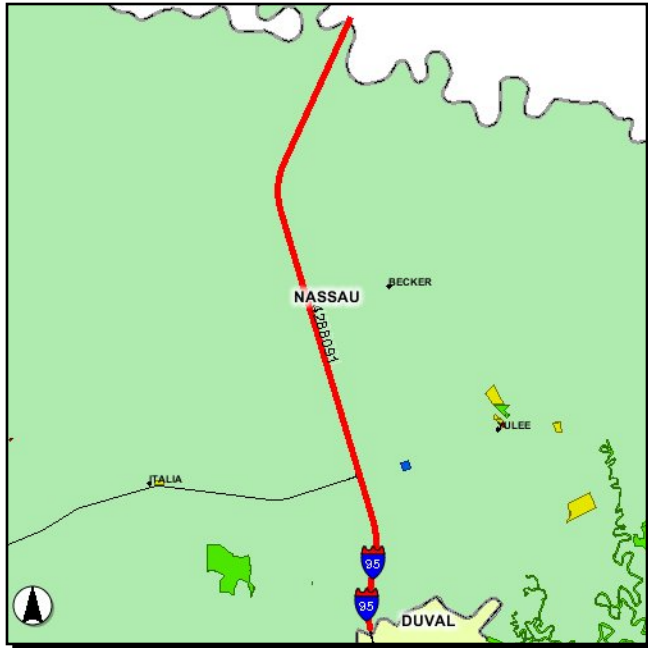
LRTP #: 30

Phase	Fund Source	2011/12	2012/13	2013/14	2014/15	2015/16	Total
PE	SU	0	500,000	0	0	0	500,000
PE	EB	0	101,000	0	0	0	101,000
ROW	SU	0	0	400,000	0	0	400,000
ROW	TRIP	0	0	1,100,000	0	0	1,100,000
ROW	EB	0	0	1,001	0	0	1,001
CST	TRIP	0	0	0	0	1,505,322	1,505,322
CST	SU	0	0	0	0	4,100,001	4,100,001
CST	EB	0	0	0	0	113,501	113,501
Total		0	601,000	1,501,001	0	5,718,824	7,820,825

Project Description:

I-95

4288091



Work Summary: RESURFACING

From: DUVAL C/L

To: TO GEORGIA S/L

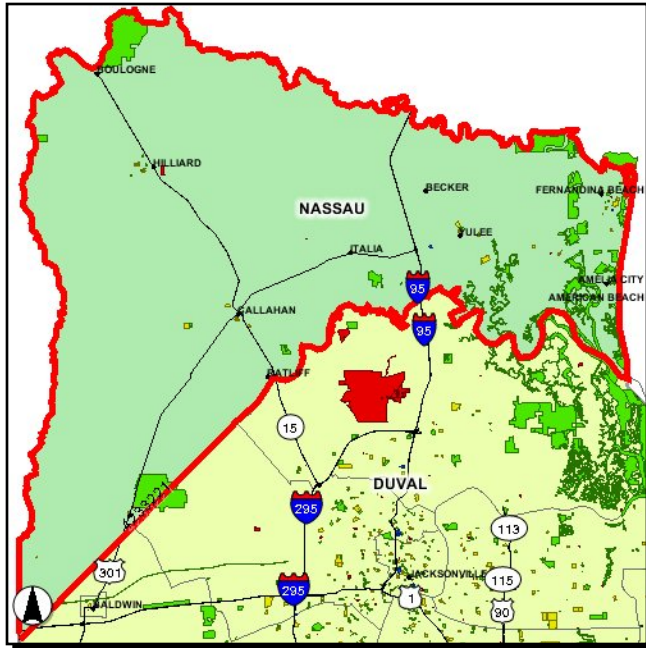
Project Length: 12.226 mi

Phase	Fund Source	2011/12	2012/13	2013/14	2014/15	2015/16	Total
PE	DIH	50,000	50,000	0	0	0	100,000
PE	ACIM	700,000	0	0	0	0	700,000
CST	DIH	0	0	110,200	113,900	470,400	694,500
CST	ACIM	0	0	23,792,180	0	0	23,792,180
Total		750,000	50,000	23,902,380	113,900	470,400	25,286,680

Project Description:

NASSAU CO COA - TRANSIT OPERATING/ADMIN ASSISTANCE

4233221



Work Summary: OPERATING/ADMIN. ASSISTANCE

From:

To:

Phase	Fund Source	2011/12	2012/13	2013/14	2014/15	2015/16	Total
OPS	DU	223,565	234,738	246,474	0	0	704,777
OPS	LF	223,565	234,738	246,474	0	0	704,777
Total		447,130	469,476	492,948	0	0	1,409,554

Project Description: SECTION 5311 OPERATING/ADMIN ASSISTANCE

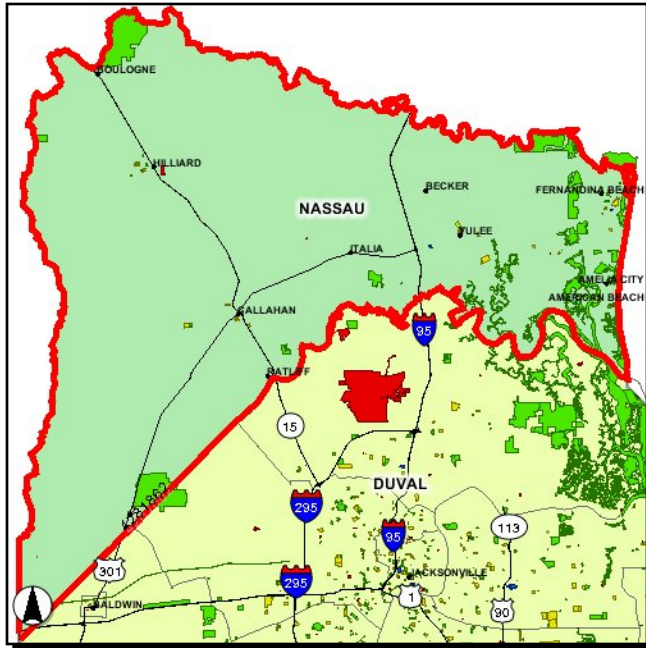
NASSAU COUNTY

4281862

Work Summary: GUARDRAIL

From: GUARDRAIL/HIGH RISK RURAL RDS (VARIOUS LOCATIONS)

To:

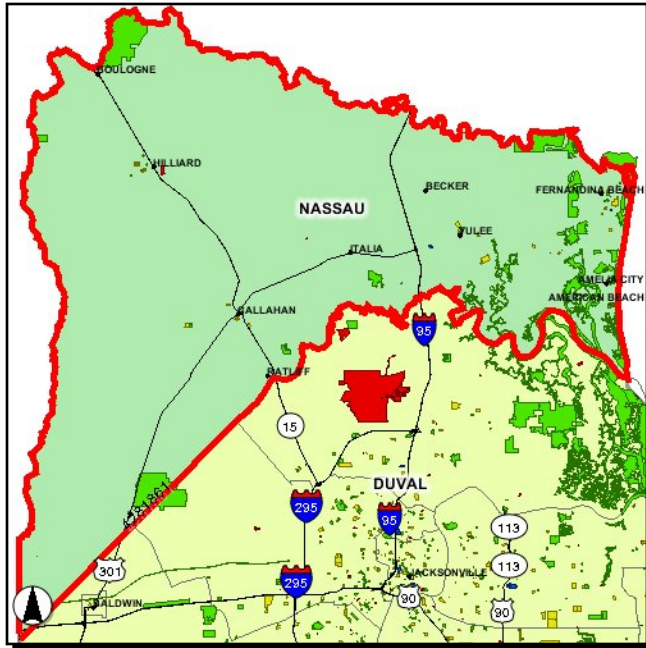


Phase	Fund Source	2011/12	2012/13	2013/14	2014/15	2015/16	Total
CST	EB	13,987	0	0	0	0	13,987
Total		13,987	0	0	0	0	13,987

Project Description:

NASSAU COUNTY

4281861



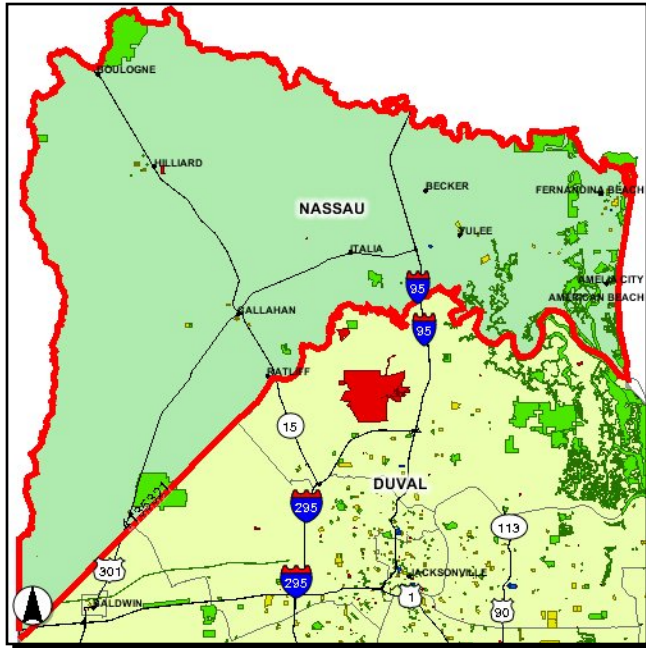
Work Summary: SIGNING/PAVEMENT MARKINGS
From: RESTRIPING 2-LANE RURAL ROADS (VARIOUS LOCATIONS)
To:

Phase	Fund Source	2011/12	2012/13	2013/14	2014/15	2015/16	Total
CST	EB	13,654	0	0	0	0	13,654
Total		13,654	0	0	0	0	13,654

Project Description:

NASSAU COUNTY - D2

4135321



Work Summary: TRAFFIC CONTROL DEVICES/SYSTEM

From:

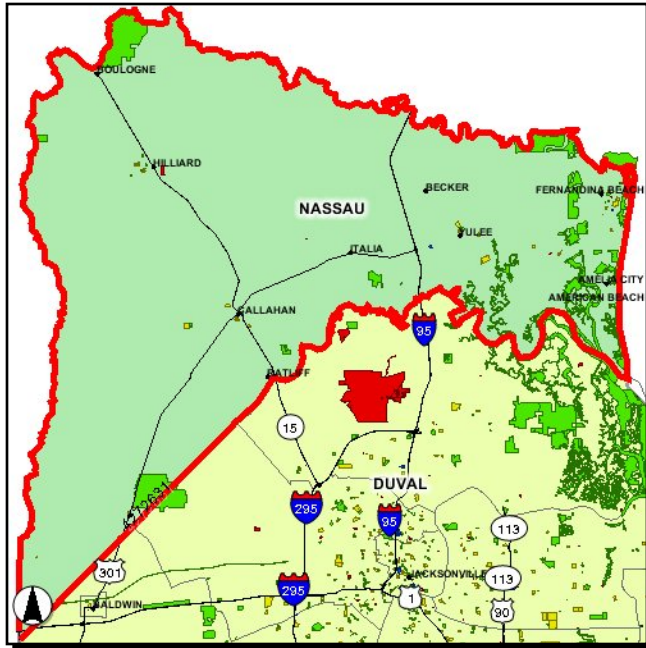
To:

Phase	Fund Source	2011/12	2012/13	2013/14	2014/15	2015/16	Total
OPS	DDR	46,367	42,196	43,471	44,777	46,130	222,941
Total		46,367	42,196	43,471	44,777	46,130	222,941

Project Description: LIGHTING MAINTENANCE/TRAFFIC CONTROL DEVICES

NASSAU COUNTY FED SECT 5311 RURAL TRANSIT FUNDING

4272631



Work Summary: OPERATING/ADMIN. ASSISTANCE

From:

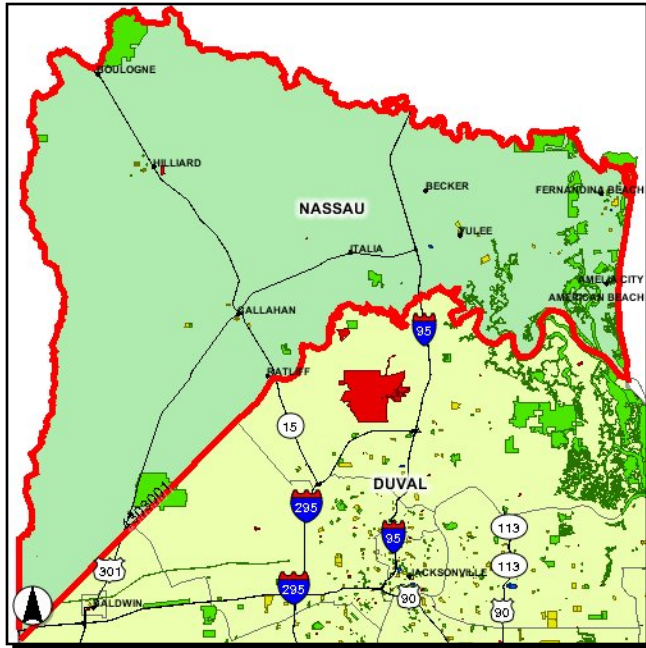
To:

Phase	Fund Source	2011/12	2012/13	2013/14	2014/15	2015/16	Total
OPS	DU	0	0	0	258,798	271,738	530,536
OPS	LF	0	0	0	258,798	271,738	530,536
Total		0	0	0	517,596	543,476	1,061,072

Project Description:

NASSAU COUNTY TRANSPORTATION CENTER

4303001



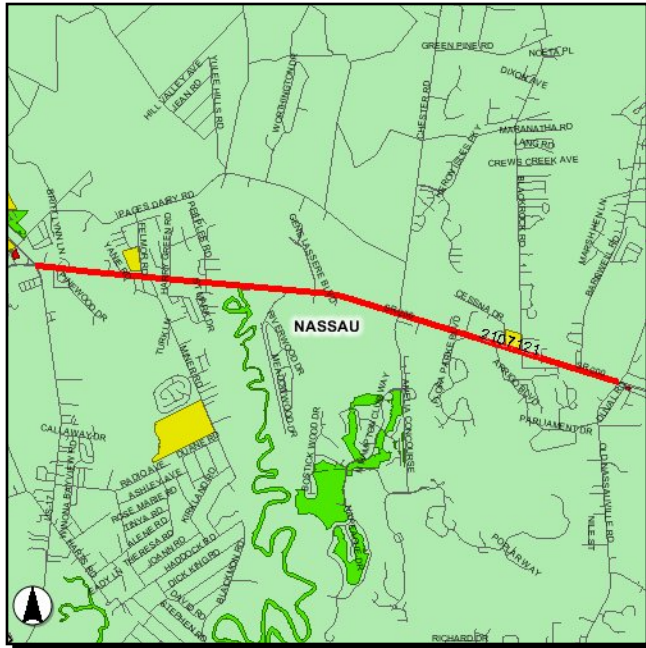
Work Summary: TRANSIT SERVICE DEMONSTRATION
From:
To:

Phase	Fund Source	2011/12	2012/13	2013/14	2014/15	2015/16	Total
CAP	DPTO	267,000	0	0	0	0	267,000
CAP	LF	267,000	0	0	0	0	267,000
Total		534,000	0	0	0	0	534,000

Project Description:

SR A1A (200)

2107121



Work Summary: ADD LANES & RECONSTRUCT

From: US 17

To: CR 107

Project Length: 8.181 mi

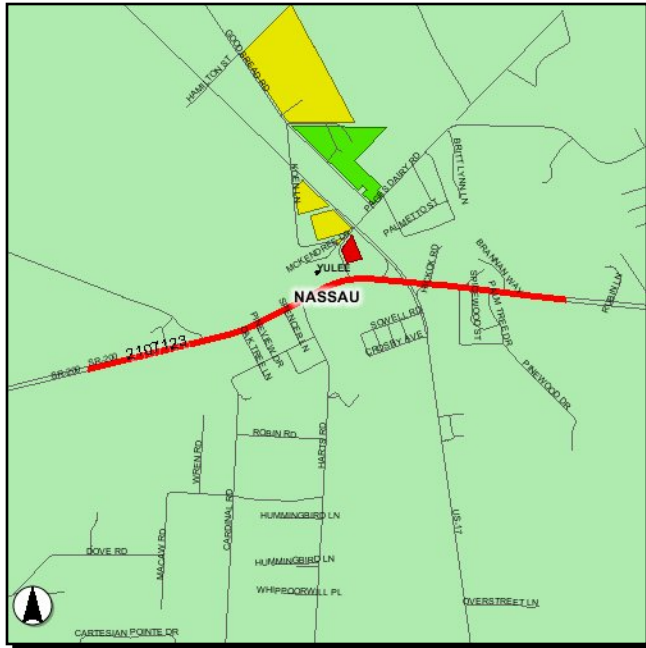
LRTP #: 137

Phase	Fund Source	2011/12	2012/13	2013/14	2014/15	2015/16	Total
PE	DDR	700,000	0	0	0	0	700,000
Total		700,000	0	0	0	0	700,000

Project Description:

SR A1A (SR 200)

2107123



Work Summary: ADD LANES & RECONSTRUCT

From: W. OF STILL QUARTERS RD

To: W. OF RUBIN LANE

Project Length: 1.542 mi

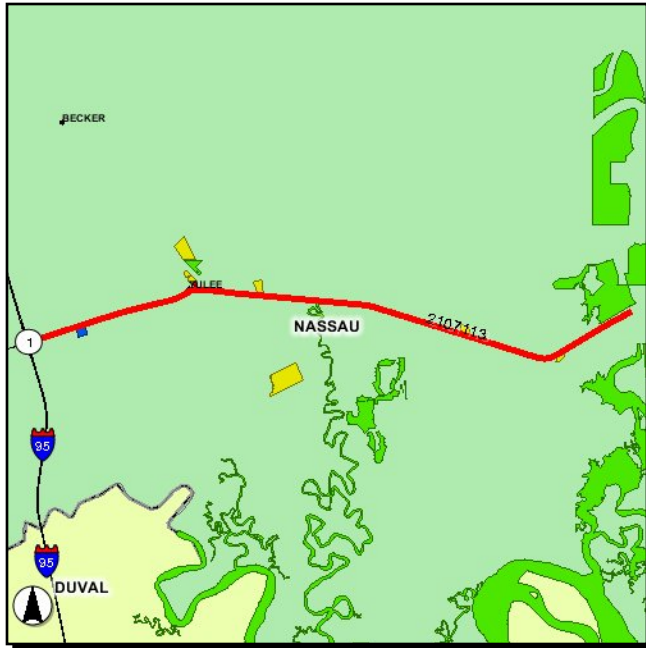
LRTP #: 137

Phase	Fund Source	2011/12	2012/13	2013/14	2014/15	2015/16	Total
ROW	SU	3,452,022	0	0	0	0	3,452,022
CST	TRIP	0	0	8,550,000	0	0	8,550,000
CST	DIH	0	0	55,100	596,836	353,388	1,005,324
CST	SU	0	0	11,337,024	0	0	11,337,024
Total		3,452,022	0	19,942,124	596,836	353,388	24,344,370

Project Description: ADD LANES & RECONSTRUCT

SR A1A (SR 200)

2107113



Work Summary: RESURFACING

From: I-95

To: AMELIA RIVER

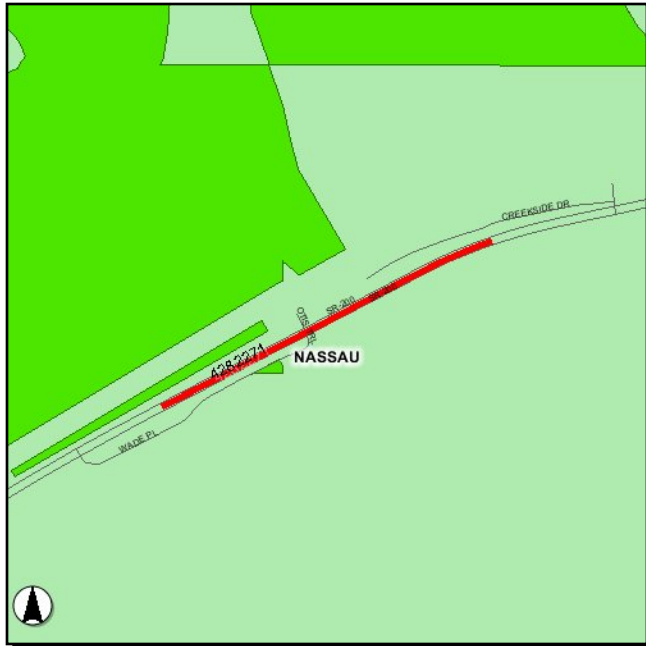
Project Length: 10.228 mi

Phase	Fund Source	2011/12	2012/13	2013/14	2014/15	2015/16	Total
CST	DIH	126,543	128,040	0	0	0	254,583
Total		126,543	128,040	0	0	0	254,583

Project Description: RESURFACING

SR A1A (SR 200)

4282271



Work Summary: BRIDGE - PAINTING

From: AMELIA RIVER BRIDGE NO'S 740087 & 88

To:

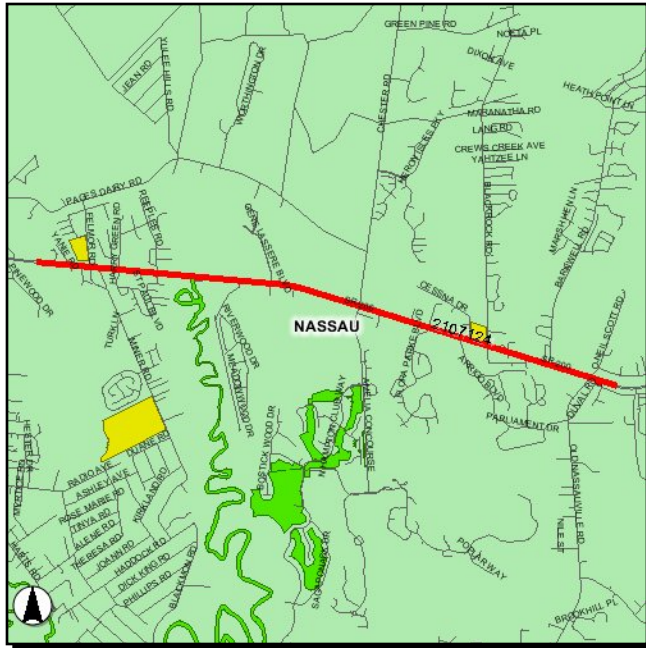
Project Length: 0.597 mi

Phase	Fund Source	2011/12	2012/13	2013/14	2014/15	2015/16	Total
PE	DIH	1,000	0	0	0	0	1,000
CST	BRRP	6,513,594	0	0	0	0	6,513,594
Total		6,514,594	0	0	0	0	6,514,594

Project Description:

SR A1A (SR 200)

2107124



Work Summary: ADD LANES & RECONSTRUCT

From: WEST OF RUBIN LANE

To: EAST OF CR 107/SCOTT RD

Project Length: 5.031 mi

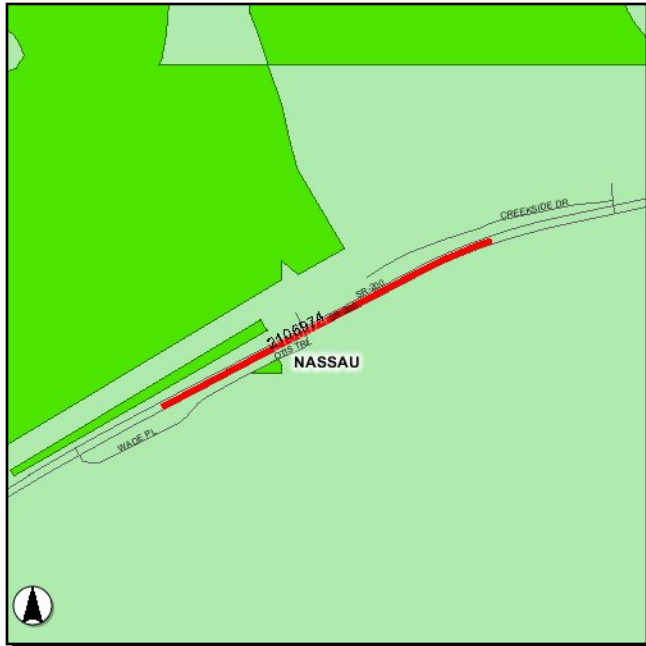
LRTP #: 137

Phase	Fund Source	2011/12	2012/13	2013/14	2014/15	2015/16	Total
ROW	SU	200,000	0	0	0	0	200,000
ROW	DS	0	7,000,000	4,039,514	0	0	11,039,514
ROW	DDR	0	0	1,696,559	0	0	1,696,559
RRU	DS	0	0	0	3,000,000	0	3,000,000
CST	DS	0	0	0	5,000,000	27,400,800	32,400,800
CST	DIH	0	0	0	0	117,600	117,600
CST	DDR	0	0	0	0	6,232,800	6,232,800
CST	EB	0	0	0	0	18,051,600	18,051,600
CST	SA	0	0	0	0	6,526,800	6,526,800
Total		200,000	7,000,000	5,736,073	8,000,000	58,329,600	79,265,673

Project Description: ADD LANES & RECONSTRUCT

SR A1A (SR 200)

2106974



Work Summary: FENDER WORK

From: AMELIA RIVER BRIDGES #740087 & #740088

To:

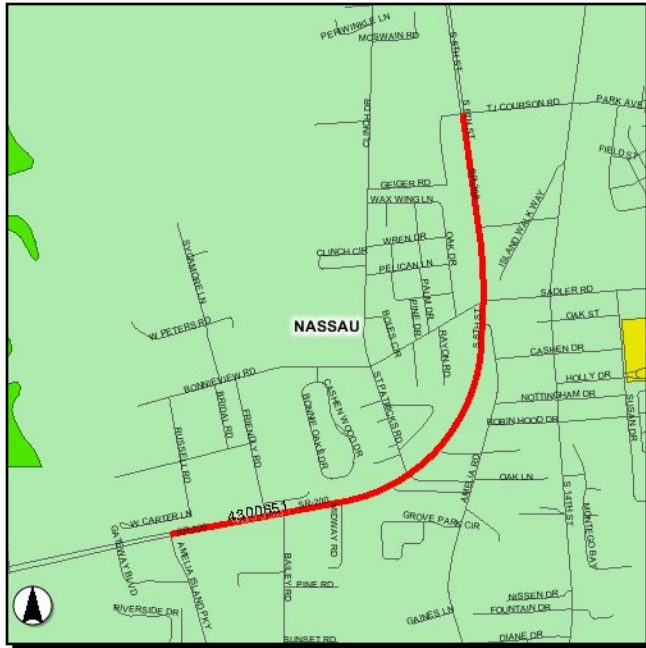
Project Length: 0.598 mi

Phase	Fund Source	2011/12	2012/13	2013/14	2014/15	2015/16	Total
CST	DIH	41,320	0	0	0	0	41,320
Total		41,320	0	0	0	0	41,320

Project Description: FENDER WORK -AMELIA RIVER BRIDGES #740087 & #740088

SR A1A (SR 200)

4300651



Work Summary: ITS COMMUNICATION SYSTEM **From:** AMELIA ISLAND PKWY

To: 15TH STREET

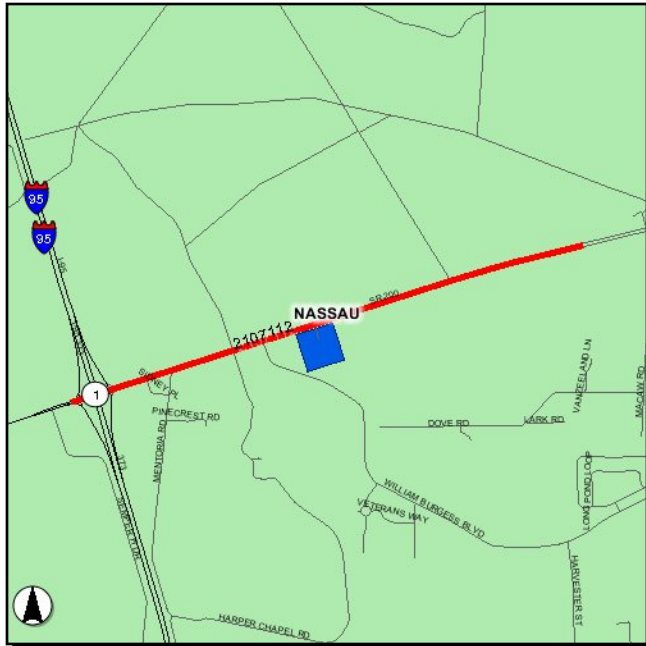
Project Length: 4.000 mi

Phase	Fund Source	2011/12	2012/13	2013/14	2014/15	2015/16	Total
CST	SU	90,000	0	0	0	0	90,000
Total		90,000	0	0	0	0	90,000

Project Description:

SR A1A (SR 200)

2107112



Work Summary: ADD LANES & RECONSTRUCT

From: I-95

To: WEST OF STILL QUARTERS RD

Project Length: 2.166 mi

LRTP #: 137

Phase	Fund Source	2011/12	2012/13	2013/14	2014/15	2015/16	Total
PE	DDR	400,000	0	10,800	0	0	410,800
ROW	DS	44,295	3,480,399	0	0	0	3,524,694
ROW	DIH	25,709	0	0	0	0	25,709
Total		470,004	3,480,399	10,800	0	0	3,961,203

Project Description: ADD LANES & RECONSTRUCT

SR A1A AMELIA ISLAND TRAIL

4274301



Work Summary: BIKE PATH/TRAIL

From: NASSAU SOUND BR

To: E. OF AMELIA ISLAND PKWY

Project Length: 6.971 mi

Phase	Fund Source	2011/12	2012/13	2013/14	2014/15	2015/16	Total
PE	DIH	40,000	20,000	0	0	0	60,000
CST	SE	1,730,864	0	0	0	0	1,730,864
CST	DIH	51,650	53,350	55,100	0	0	160,100
Total		1,822,514	73,350	55,100	0	0	1,950,964

Project Description:

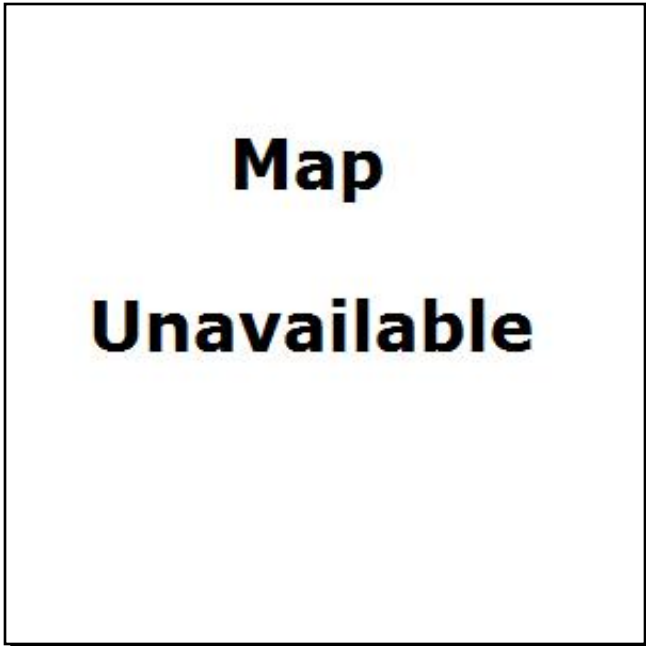
THREE SIDEWALKS

4288421

Work Summary: SIDEWALK

From: SOUTH 14TH STREET

To: WILL HARDEE ROAD

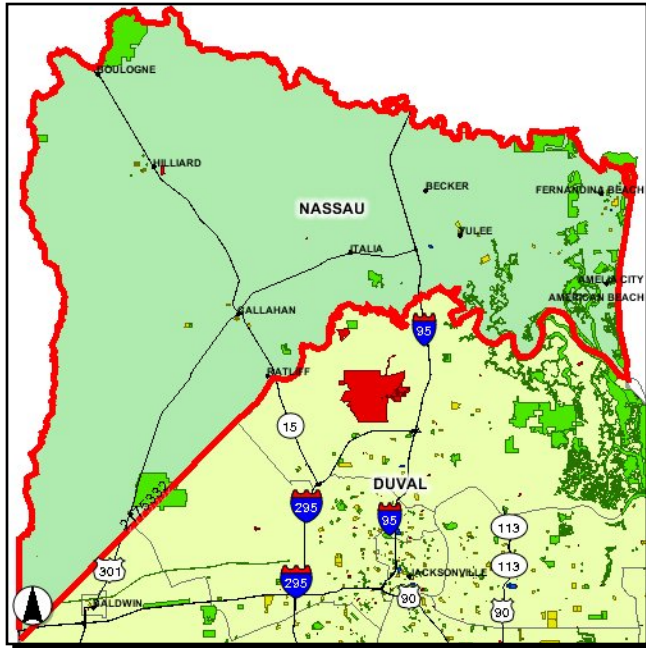


Phase	Fund Source	2011/12	2012/13	2013/14	2014/15	2015/16	Total
CST	SR2S	198,336	0	0	0	0	198,336
CST	EB	35,165	0	0	0	0	35,165
Total		233,501	0	0	0	0	233,501

Project Description:

TRANSPORTATION DISADVANTAGED LCB GRANT

2175332



Work Summary: TD COMMISSION - CAPITAL

From:

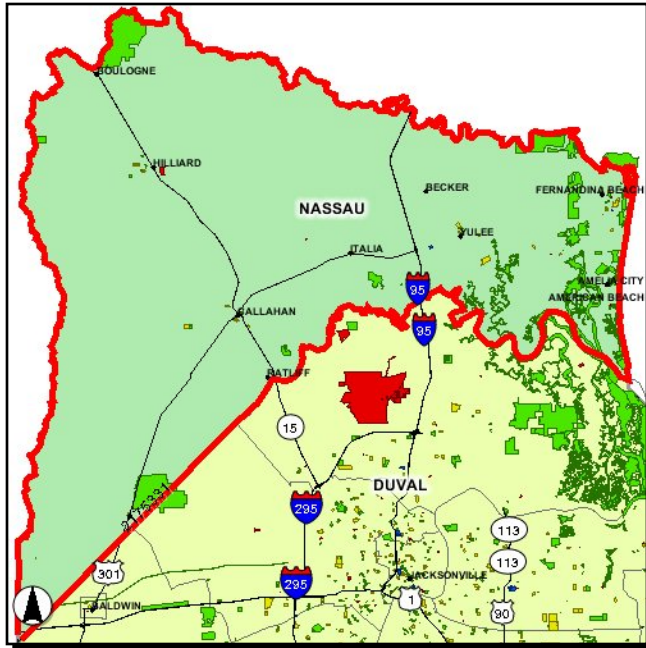
To:

Phase	Fund Source	2011/12	2012/13	2013/14	2014/15	2015/16	Total
PLN	TDTF	19,769	19,769	19,769	18,496	18,496	96,299
Total		19,769	19,769	19,769	18,496	18,496	96,299

Project Description: NASSAU COUNTY TD COMMISSION (LCB ASSISTANCE GRANT)

TRANSPORTATION DISADVANTAGED T/E GRANT

2175331



Work Summary: TD COMMISSION - CAPITAL

From:

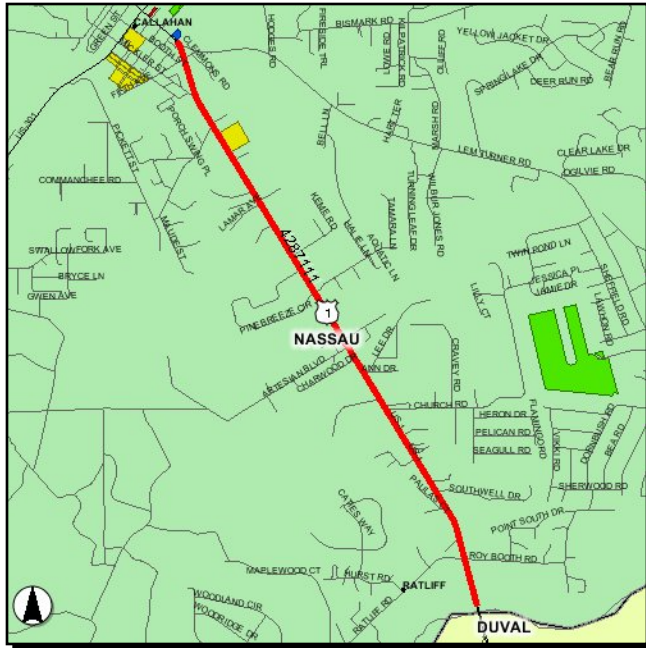
To:

Phase	Fund Source	2011/12	2012/13	2013/14	2014/15	2015/16	Total
OPS	TDTF	220,070	225,743	212,568	233,736	233,736	1,125,853
OPS	TDDR	12,480	10,930	10,930	10,930	10,930	56,200
OPS	LF	24,833	26,297	27,216	27,185	27,185	132,716
Total		257,383	262,970	250,714	271,851	271,851	1,314,769

Project Description: NASSAU COUNTY TD COMMISSION (TRIP EQUIPMENT GRANT)

US 1 (SR 15)

4287111



Work Summary: RESURFACING

From: DUVAL C/L

To: 5TH AVE

Project Length: 4.300 mi

Phase	Fund Source	2011/12	2012/13	2013/14	2014/15	2015/16	Total
PE	DIH	10,000	0	0	0	0	10,000
PE	DDR	220,000	0	0	15,000	0	235,000
CST	DS	0	0	0	8,901,855	0	8,901,855
CST	DIH	0	0	0	316,186	326,458	642,644
Total		230,000	0	0	9,233,041	326,458	9,789,499

Project Description:

US 1 (SR 15)

4269621

Work Summary: RESURFACING

From: FIFTH AVENUE

To: ALLIGATOR CREEK

Project Length: 0.766 mi

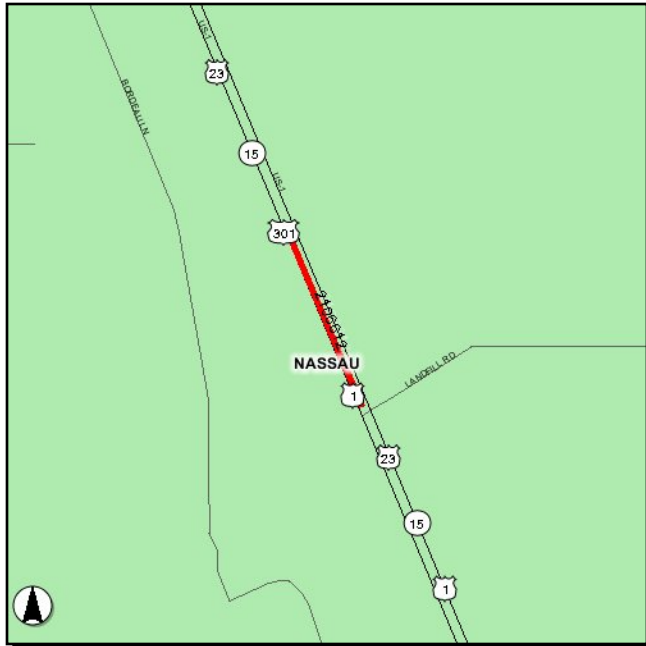


Phase	Fund Source	2011/12	2012/13	2013/14	2014/15	2015/16	Total
CST	DS	0	1,258,869	0	0	0	1,258,869
CST	DIH	0	11,132	0	0	0	11,132
Total		0	1,270,001	0	0	0	1,270,001

Project Description:

US 1 (SR 15)

2106612



Work Summary: ADD LEFT TURN LANE(S)

From: 3.5 MI.N. OF CALLAHAN

To:

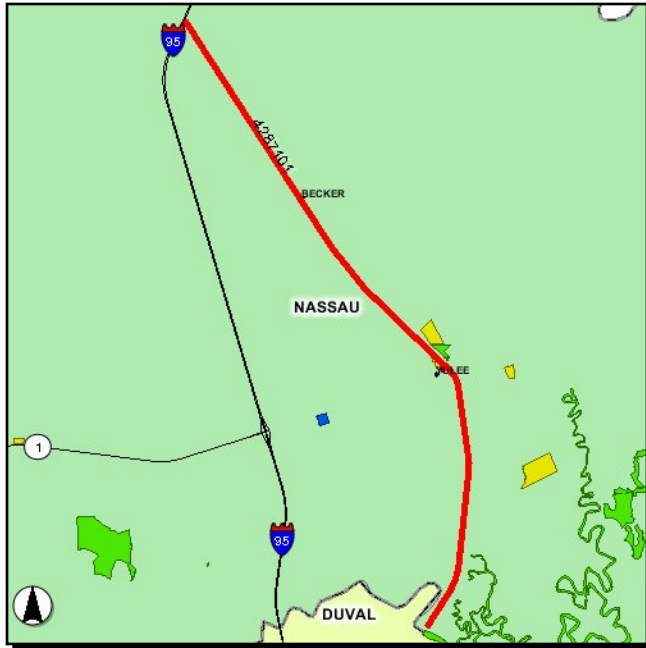
Project Length: 0.200 mi

Phase	Fund Source	2011/12	2012/13	2013/14	2014/15	2015/16	Total
CST	DIH	0	41,624	0	0	0	41,624
CST	SA	0	326,369	0	0	0	326,369
Total		0	367,993	0	0	0	367,993

Project Description:

US 17 (SR 5)

4287101



Work Summary: RESURFACING

From: DUVAL C/L

To: I-95

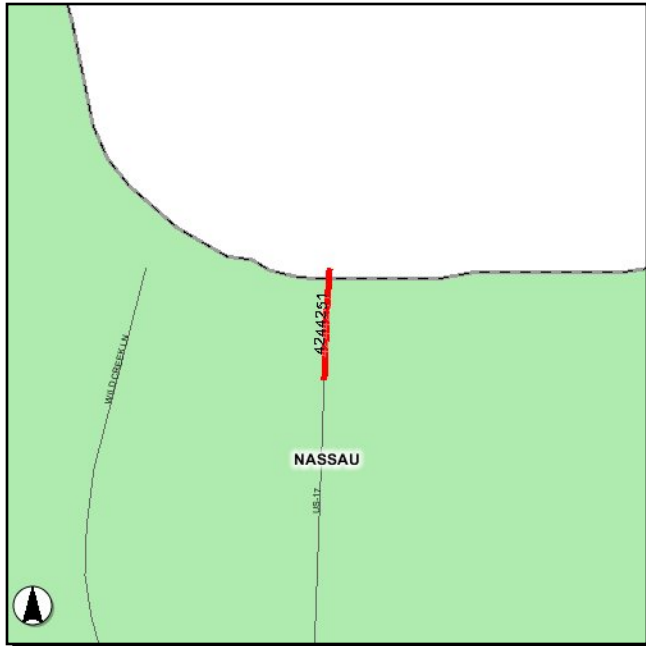
Project Length: 10.928 mi

Phase	Fund Source	2011/12	2012/13	2013/14	2014/15	2015/16	Total
PE	DIH	10,000	0	0	0	0	10,000
PE	DDR	220,000	0	18,300	0	0	238,300
RRU	DDR	0	10,000	0	0	0	10,000
CST	DIH	0	0	133,510	251,892	260,075	645,477
CST	DDR	0	0	7,168,766	0	0	7,168,766
Total		230,000	10,000	7,320,576	251,892	260,075	8,072,543

Project Description:

US 17 (SR 5)

4244251



Work Summary:

From: ST.MARY'S RIVER BRIDGE #740008
RPR PIER 5

To:

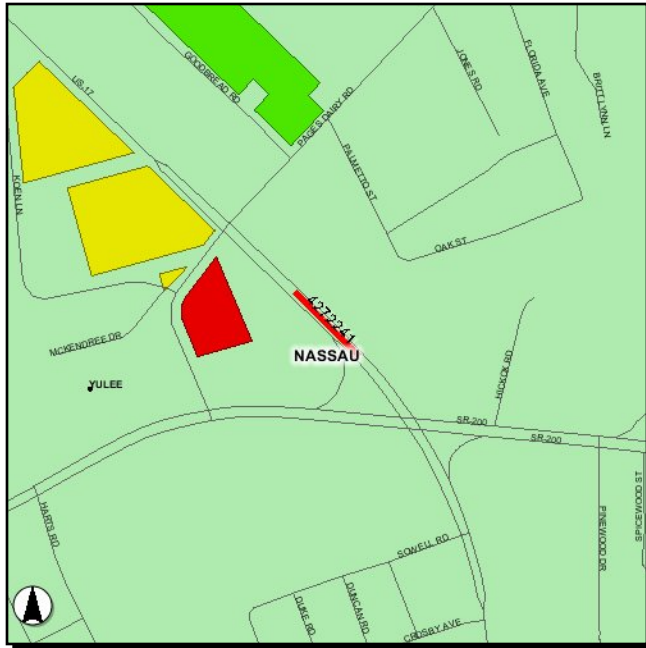
Project Length: 0.107 mi

Phase	Fund Source	2011/12	2012/13	2013/14	2014/15	2015/16	Total
PE	DIH	1,000	0	0	0	0	1,000
PE	BRRP	150,000	0	0	0	0	150,000
CST	DIH	0	107,541	55,100	23,678	0	186,319
CST	BRRP	0	2,121,773	0	0	0	2,121,773
Total		151,000	2,229,314	55,100	23,678	0	2,459,092

Project Description:

US 17 (SR 5)

4272241



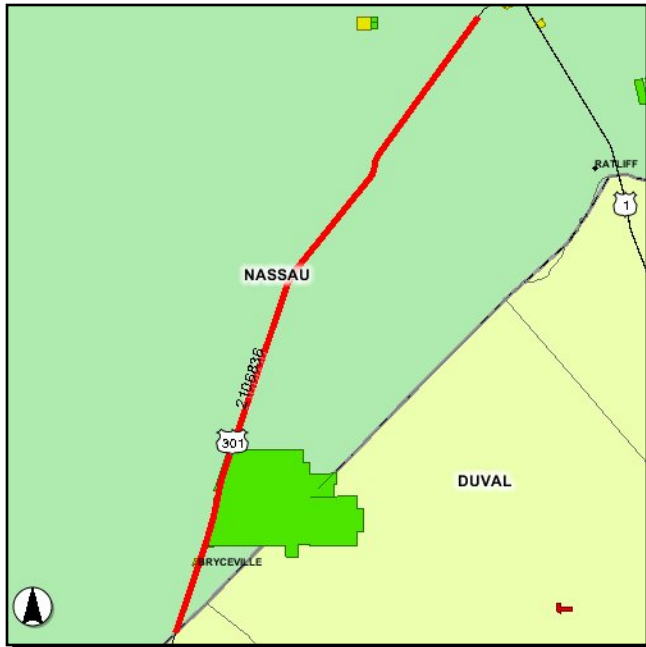
Work Summary: RAILROAD CROSSING **From:** YULEE REBUILD RAILROAD CROSSING #620800-X
To:

Phase	Fund Source	2011/12	2012/13	2013/14	2014/15	2015/16	Total
RRU	EB	0	0	375,000	0	0	375,000
Total		0	0	375,000	0	0	375,000

Project Description:

US 301 (SR 200)

2106836



Work Summary: MAINTENANCE
RESURFACING (FLEX)

From: DUVAL C/L

To: SOUTH OF CALLAHAN

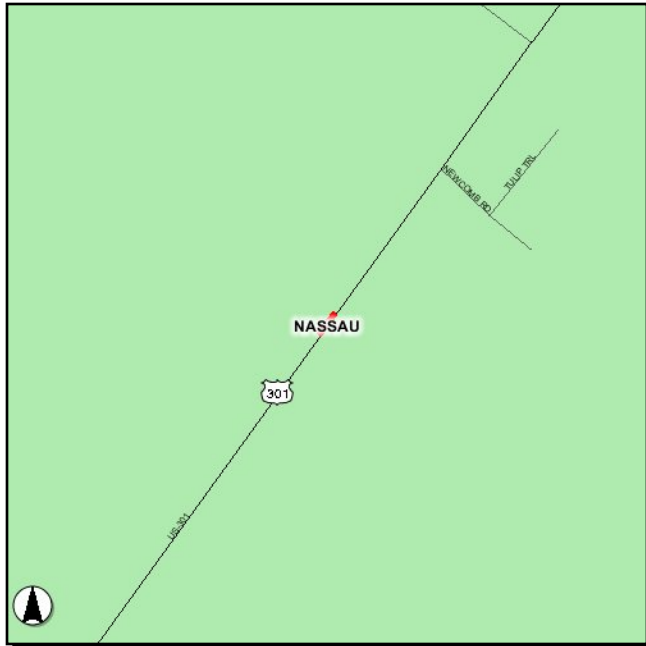
Project Length: 14.621 mi

Phase	Fund Source	2011/12	2012/13	2013/14	2014/15	2015/16	Total
CST	DIH	77,475	80,025	0	0	0	157,500
Total		77,475	80,025	0	0	0	157,500

Project Description: RESURFACING

US 301 (SR 200)

2106835



Work Summary: BRIDGE REPLACEMENT **From:** FUNKS CREEK BRIDGE #740024

To:

Project Length: 0.009 mi

Phase	Fund Source	2011/12	2012/13	2013/14	2014/15	2015/16	Total
CST	DIH	55,100	53,350	0	0	0	108,450
Total		55,100	53,350	0	0	0	108,450

Project Description: BRIDGE REPLACEMENT @ FUNKS CREEK BRIDGE #740024

US 90 (SR 10)

4244711



Work Summary: RESURFACING

From: BAKER C/L

To: DUVAL C/L

Project Length: 2.173 mi

Phase	Fund Source	2011/12	2012/13	2013/14	2014/15	2015/16	Total
CST	DS	28,583	0	0	0	0	28,583
CST	DIH	37,405	26,675	17,863	0	0	81,943
CST	EB	3,037,020	0	0	0	0	3,037,020
Total		3,103,008	26,675	17,863	0	0	3,147,546

Project Description: